

427

157

165

417

453

473

489

485

481

483

585

546

716

206

487

457

402

518

472

582

547

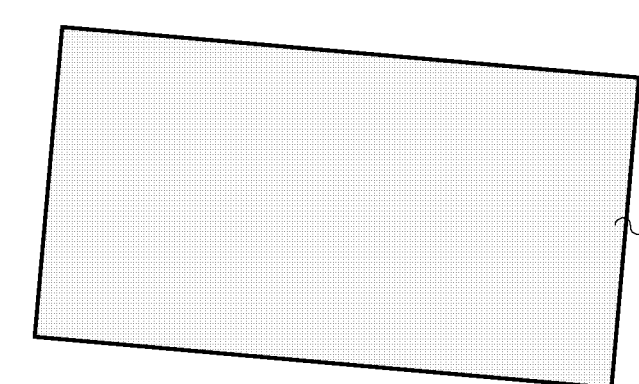
548

207

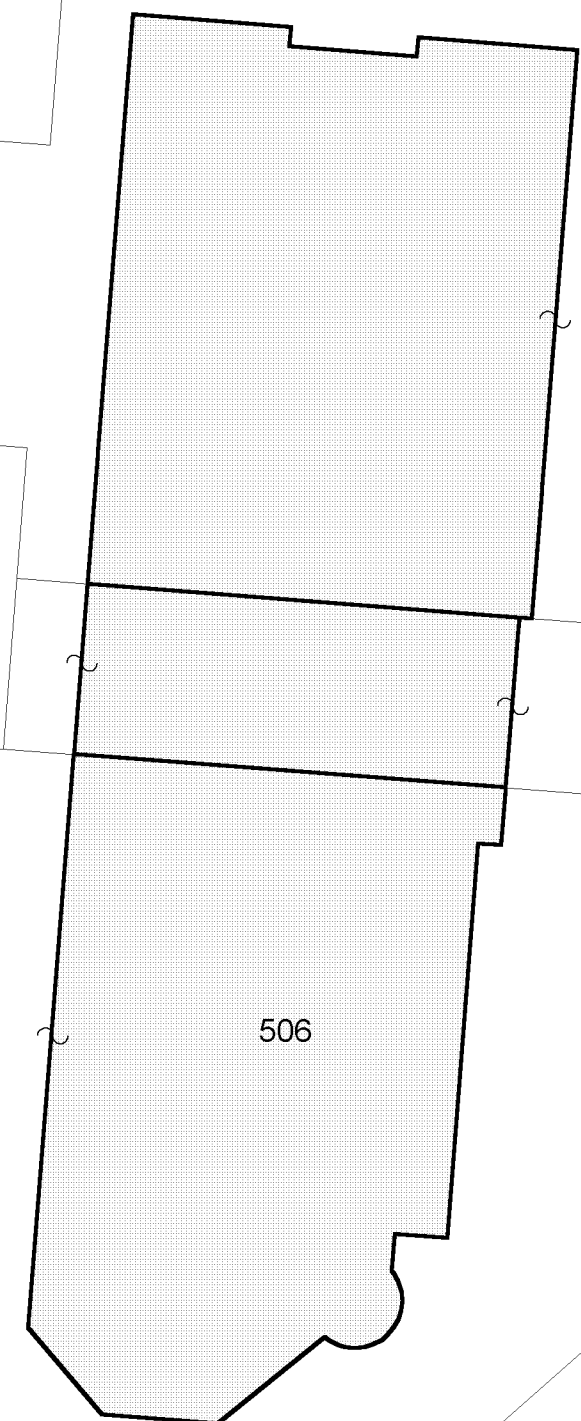
158

Bisac

Foglio 9



548



506

444

519

583

584

441

447

512

513

433

437

S. Giorgio

provinciale

strada

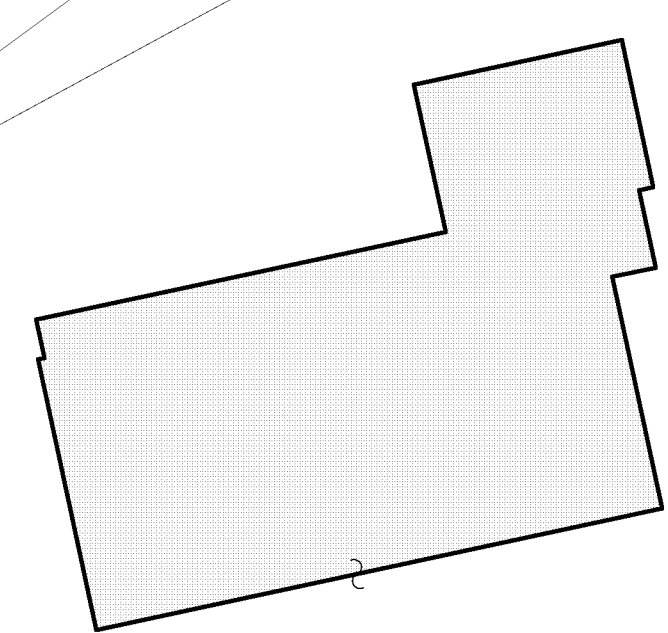
Foglio 10

comunale

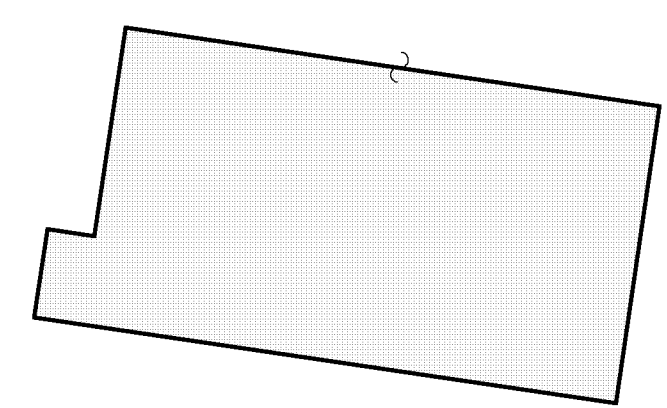
strada

508

509



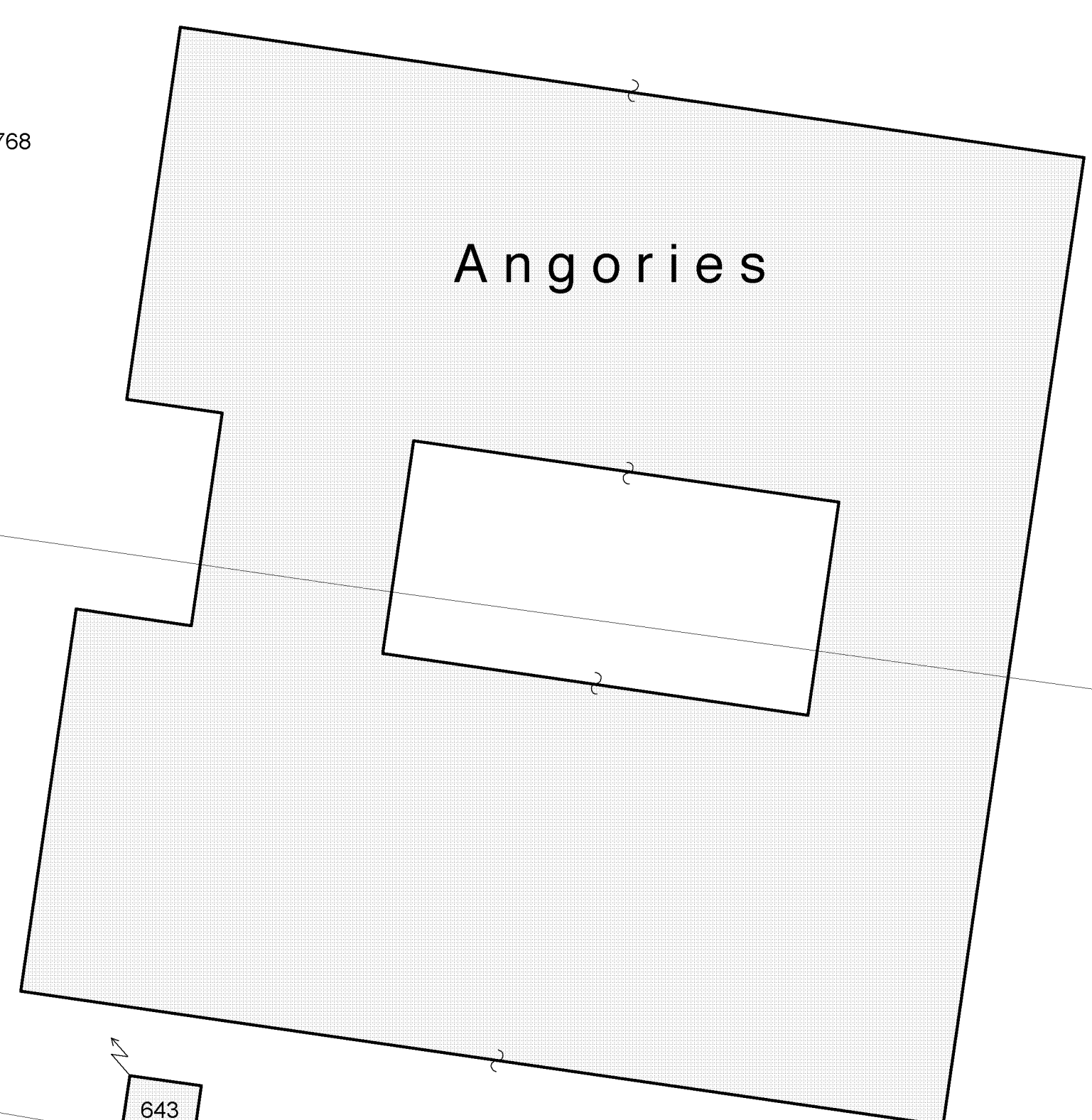
556



498

768

Angories



319

859

861

857

866

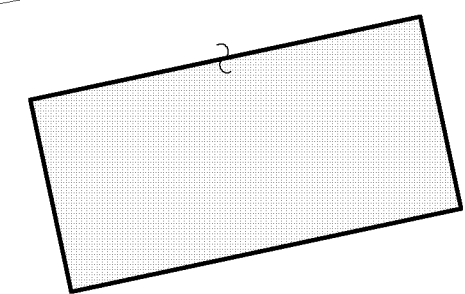
107

108

160

161

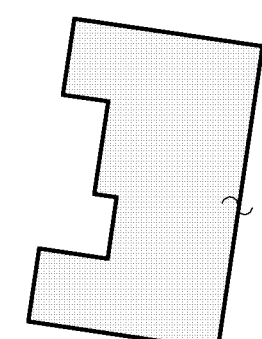
517



544

511

517



230

479

643



Comune di Porpetto
ZONA H2 - COMMERCIALE, DI INTERESSE COMUNALE
PIANO ATTUATIVO COMUNALE «CENTRALE»
Stato di fatto, 4

PLANIMETRIA CATASTALE

Planimetria, sc. 1: 500

ARCHIUR Srl UDINE

+++++ Pac, perimetro
- - - - - Foglio di mappa, limite